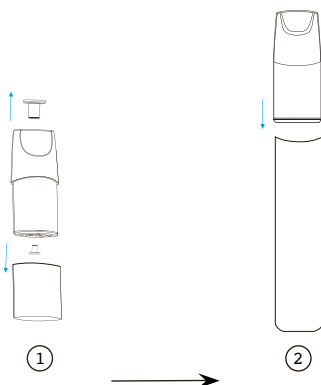
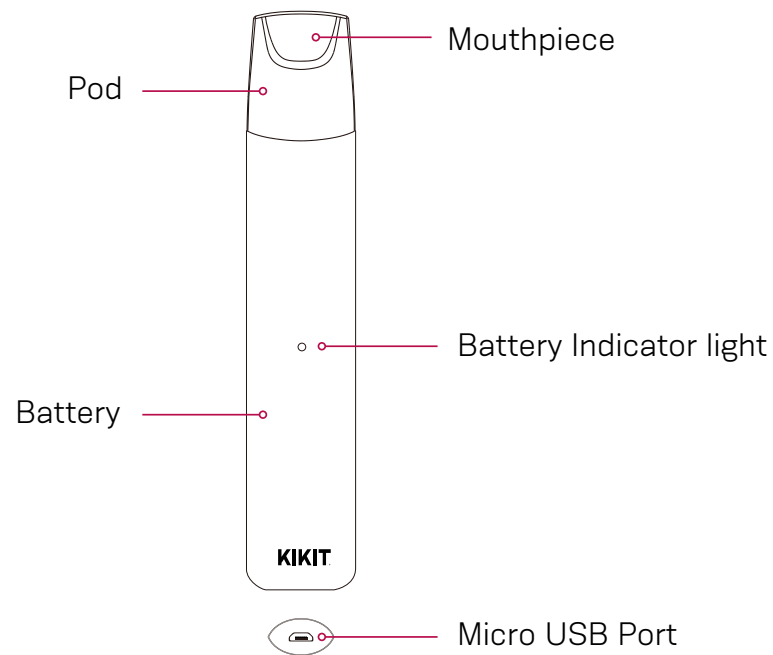


# INSTRUCTIONS

PLEASE READ THIS MANUAL CAREFULLY BEFORE USE

## »»» STRUCTURE CHART



### Step 1

Remove mouthpiece cover, and rubber covers at bottom of pod

### Step 2

Insert pod into the battery matching up curves on the battery to the curves on the pod

## »»» USER OPERATION

1. As it is a button-less device and automatic take a slow 2-4 sec draw.
2. An overdraw of over 10 seconds will cause the battery light to flash 2 times and stop.
3. Low battery will cause the indicator light to flash 10 times .
4. Charging is required via the USB Port at the bottom of the battery.
5. Charge time approx. 1 hour
6. The LED light in the middle of the battery will be on when charging and off when fully charged
7. If not working check battery is fully charged and all rubber covers are removed from top and bottom of pod

### Battery & Pod Specifications

Pod Capacity	2.0ml <b>Approx 380 puffs per pod</b>	USB Input	5V/0.3A
Battery Life	300 charges <b>Approx 250 puffs per charge</b>	Charge Time	1-1.5H
Battery Capacity	350 mAh	Resistance	1.2Ω

### Notes

- Keep away from direct sunlight or high temperatures when not in use
  - If bottom of pod is damp when removed from packaging or whilst in use, wipe immediately and reinsert. This can restrict air flow and cause the pod to fail. Slight seepage can occur due to humidity changes
  - Keep away from children
  - Do not use over 5.5v power charger when charging
  - Do not place in pocket or bag next to other metal objects to prevent short circuit of battery
  - Keep away from water
  - Children , pregnant women , breastfeeding women are prohibited to use the device
- Intended for recreation use for existing smokers. KIKIT make no therapeutical claim to vaping

